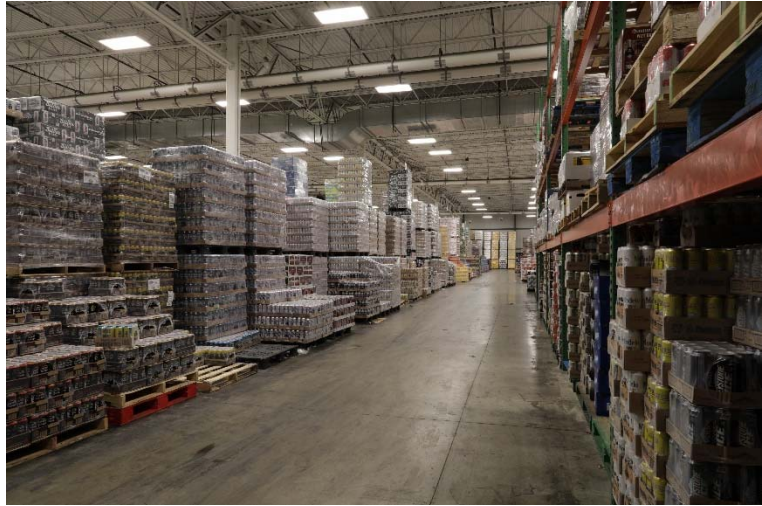


Warehouse Selectors – Beer & Wine

Our Warehouse Selectors are responsible for the accurate product selection for various customer-type orders including supermarkets, convenience, specialty stores, taverns and restaurants. These positions work an early afternoon into evening schedule based on customer needs.

Nappi's Warehouse Selectors works as part of a team to safely, accurately, and efficiently select products to fulfill customer needs. .



Essential Functions

- Safe, accurate, repetitive product selection to build orders
- Construct product pallets
- Wrap and stage product to prepare shipments
- Safely operate pallet jack (manual and electric) and if designated, forklift (gas and electric)
- Work safely, efficiently and collaboratively, with a team
- Follow all safety guidelines and exercise solid judgement to work safely
- Ensures all work areas are kept clean and organized

Experience/Skills/Requirements

- Excellent attention to detail
- Safety conscious 'heads-up attitude/approach
- Ability to work effectively in a fast paced, team based environment
- Adhere to all safety guidelines/requirements, including proper body mechanics
- Dependable and punctual
- Previous warehouse experience is helpful
- Previous experience with pallet jacks and/or other powered industrial equipment is helpful
- Effective communication and interpersonal skills; excellent customer service aptitude
- Flexibility to adjust and extend work schedule when requested to meet customer needs

Note: This job description is intended to outline major responsibilities and is not all-inclusive. Duties, responsibilities and activities may change at any time with or without notice.

Physical and Mental Demands

Physical and mental ability to perform the duties of this job include physical ability to lift product of varying weights of up to 65 lbs. from and to multiple levels, including above shoulder and at floor level, on a constant basis; ability to push, pull reach for, and move products of up to 180 lbs. using a wheeler or other equipment; continuous standing for up to 12 hours (with normal break schedules); frequent bending, stooping, kneeling, crouching, climbing (stairs) and reaching.

Cognitive, intellectual and mental ability to concentrate on details, accurately read from printed order lists and to perform more than one task at a time, including when under significant time and other pressures. Must be able to communicate professionally and effectively with co-workers and all levels of personnel.